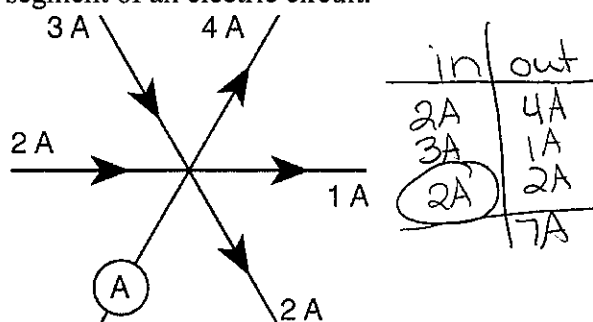


Skill 45-Junction Rule

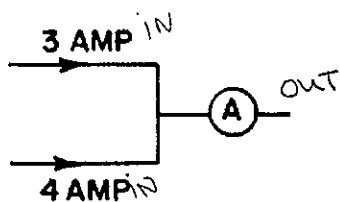
203. The diagram below represents currents in a segment of an electric circuit.



What is the reading of ammeter A ?

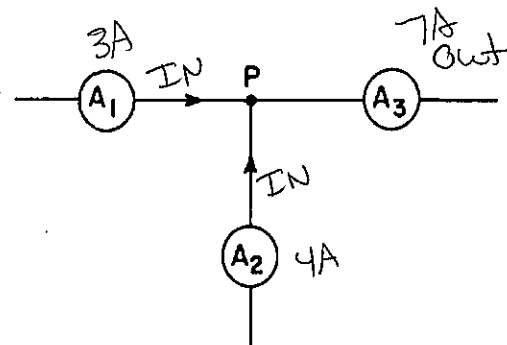
- A) 1 A B) 2 A C) 3 A D) 4 A

204. The diagram below represents a segment of a circuit. What is the current in ammeter A ?



- A) 1 A B) 0 A
C) 3.5 A D) 7 A

205. Three ammeters are located near junction P in a direct current circuit as shown in the diagram below.

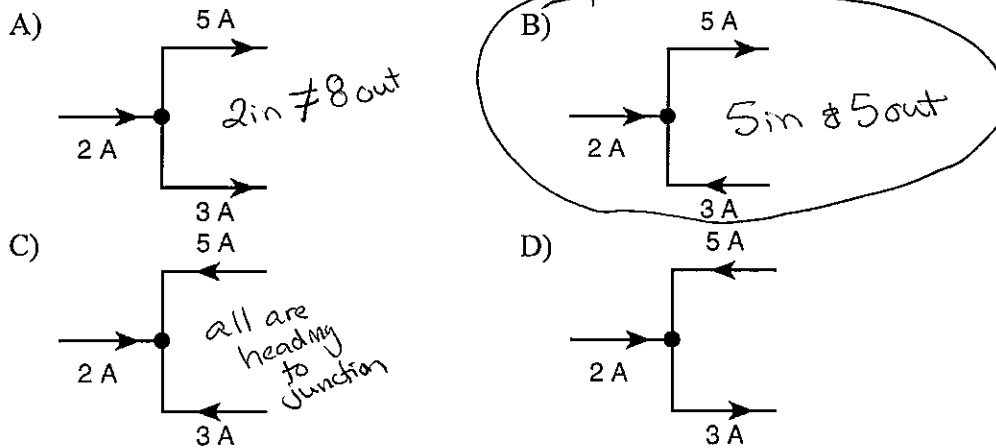


If ammeter A_1 reads 3 amperes and ammeter A_2 reads 4 amperes, then what does ammeter A_3 read?

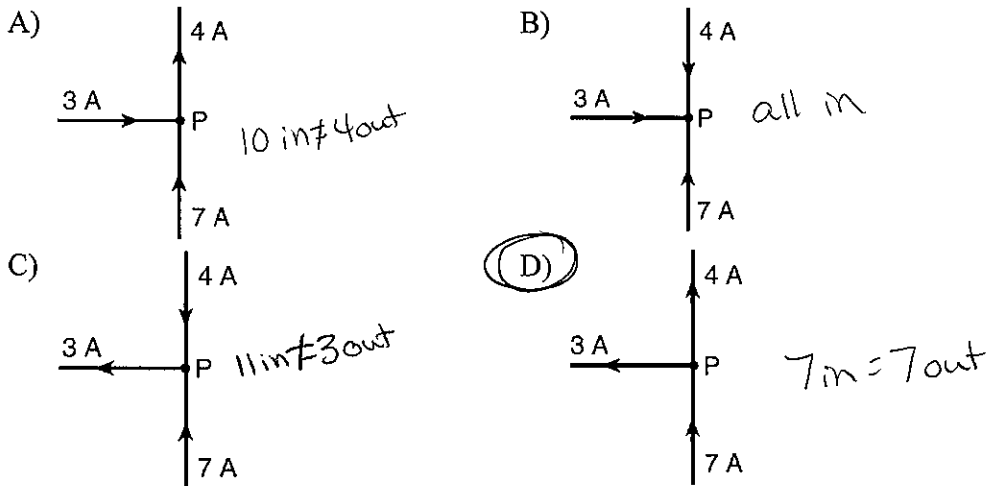
- A) 5 A B) 7 A C) 3 A D) 8 A

Skill 45-Junction Rule

206. Which diagram shows correct current direction in a segment of an electric circuit?

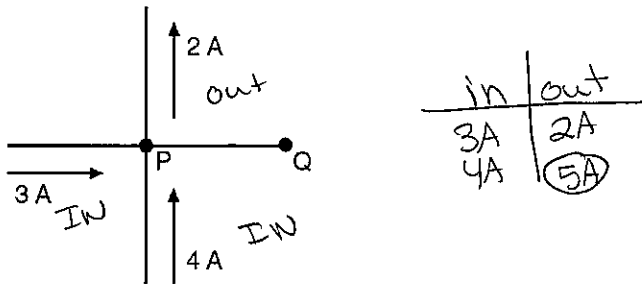


207. Which diagram below correctly shows currents traveling near junction *P* in an electric circuit?



Skill 45-Junction Rule

208. The diagram below shows electric currents in conductors that meet at junction P .



What are the magnitude and direction of the current in conductor PQ ?

- A) 9 A toward P B) 9 A toward Q
C) 5 A toward P D) 5 A toward Q